

The LINKIN Health Study

Next stage:
Talking with you



Tel: 08 83133466 info@linkinhealth.org.au
www.linkinhealth.org.au

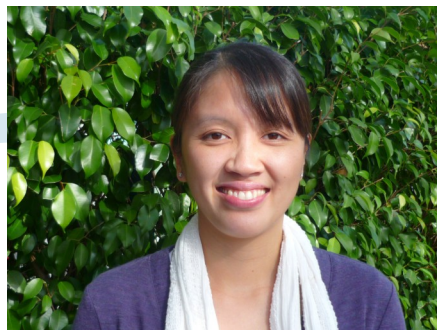
© Linkin Health Study

Some information from the LINKIN Health Census ...

- Most households have internet access (around 80%).
- Most households had children (62%).
- A large proportion of people were married or living with a partner (64%). The rest were single (19%), widowed (8%), separated or divorced (9%).
- If you have a low income, are separated, divorced or widowed, or have fewer educational qualifications you are more likely to rate your health as 'fair' or 'poor'.
- Nearly 60% of people were either full or part time employed.
- There was a significant proportion of retired persons (22%).
- 14% of respondents reported having to care for someone.

Who is doing this?

Meet **Clara Pham**. She is the skilled health services researcher who is one of the experts looking carefully at the information in the Health census.



UNIVERSITY OF ADELAIDE

After 10.10.10 what comes next?

People in Port Lincoln have strongly supported the Port Lincoln Health Census, with **3/4** of all households responding to the survey.

This included **250 Port Lincoln Aboriginal people**, which is 54% of the adult Aboriginal population here.

With such a great response, the research team has been able to identify some clear areas of health care interest.

We are also developing a **sense of what might be key priorities for the Port Lincoln community** and what significant health trends are emerging.

Now we begin a **program of interaction with the Port Lincoln community**. This will be based on talking with users of services and providers of services about what the research has found so far.

These discussions will take place in Port Lincoln over the next six months. **Please take every opportunity to participate and have your say whether you are a health service user or provider.**

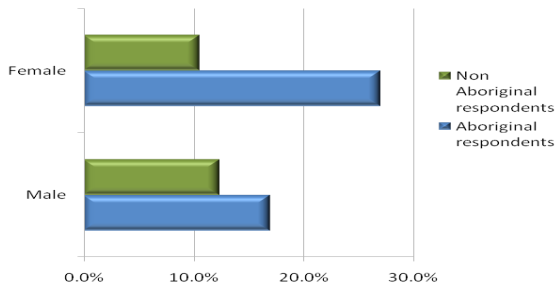
We look forward to working with you.

Spotlight on some areas of special interest:

Aboriginal Health

We can see that many Aboriginal people reported having diabetes or high blood sugar levels.

Self reported diabetes /high blood sugar for Aboriginal and Non Aboriginal respondents by gender



We have presented a range of results of interest to the Port Lincoln Aboriginal Health Service and the Port Lincoln Aboriginal Community Council. An important aspect of health is people's living conditions, such as housing, and we are exploring these data analyses.

Emma Richards is our Indigenous Project Officer, as shown here with Kathryn. Emma will be busy with her beautiful new baby, Linda-Shane, but will continue to be part of our team.



Community Engagement Programme We want to talk to you

The LINKIN Health Census was the start of an information gathering process that aims to involve the local community as much as possible throughout the research process.

What will we be doing?

We will be taking as many bookings as possible to come to community groups, health service providers, organizations, councils:

- To present and discuss the results of the LINKIN Health Census.
- To talk about aspects of health care that are of concern.
- To consider ways to improve patient care pathways for Port Lincoln residents.
- To talk about what might become important in the future.

We would like to understand your main concerns and views on preferred or workable solutions.

Be part of the discussions

We will be visiting health providers.

Forums will be scheduled as open public meetings.

Focus groups will be held in Port Lincoln.

See the LINKIN website –
www.linkinhealth.org.au – for dates and opportunities.

To discuss your preferred way of future engagement and maintaining dialogue and input please CONTACT:

Dr Kathryn Powell

Community Engagement

Ph: 08 8313 3466

Email: kathryn.powell@adelaide.edu.au



We look forward to talking to you about health and social care services

OR contact:

Dr Elizabeth Hoon

Project Coordinator

Ph: 08 8313 1567

08 8313 3466

info@linkinhealth.org.au

www.linkinhealth.org.au

© LINKIN Health Study

